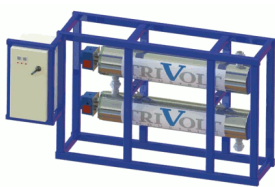




Aluma Finned Immersion Heater

Available in aluminum (T-6360), standard carbon steel & stainless steel

Low watt density surface



Circulation Heaters

Mounted on skid with control panel

ASME and CRN certification

Up to 600 LBS flange

1100 PSI



Immersion Heater Flange

Element material: stainless steel, copper or incoloy

Max.14” flange in steel and stainless steel

Nema 4 and Nema 7 housing

Up to 300 PSI pressure

Built-in thermostat and sensor available



Moisture Proof Band Heater

Mica construction

Brass or stainless steel

Up to 35 WPSI

Maximum operating temperature 800 ° F

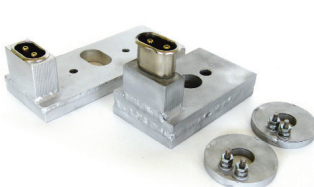


Plate Heaters

Available in aluminum and stainless steel

Available for water proof applications

Up to 35 WPSI

Maximum operating temperature 850 ° F



Cartridge Heater

Stainless steel tube

Magnesia powder and ceramic core

Low, medium, and high density available

Up to 322 WPSI

Maximum operating temperature 1472 ° F



Bushing Heater

Element: stainless steel, copper or incoloy

Up to 3” NPT brass or stainless steel bushing

Nema 4 and Nema 7 housing

All heaters are pressure tested

Built-in thermostat and sensor available



Systems

Control panel with Circulation heaters

Control panel with Duct heaters

All special systems available



Triflex Immersion Heater

Low density Immersion heater

Nema 1 nema 4 and Hazloc available

All voltages and Phases available

Available in screw plug or flange mount.



Split Cartridge Heater

Manufactured in Stainless steel

Available different lead exit

Operating Temperature 1200° F

Available in Metric or Inches



Coil Heater

304 stainless steel tube

Heavily compressed Magnesium Oxide

Cross section 3.7mm round; 3.3 x 3.3”

square; 4.5 x 2.5” rectangular

Melting temperature 2552 ° F



Tubular Heaters and Fin Tubular

Stainless steel, copper or incoloy tubing

High temperature compacted MGO

Sizes in diameter 1/4; 5/16; 7/16; 31/64”

and metric also available

Different shapes available in all diameters



Mica Band Heater and Mica Strip Heater

Mica construction

Stainless steel and satin coat metal

Up to 40 WPSI

Maximum operating temperature 800 ° F

HT 950 ° F



Power Band Heaters

Maximum operating temperature 1300 ° F

Stainless steel construction

Also available fully sealed

Up to 100 WPSI



Ceramic Band Heater

Ceramic construction

Stainless steel sheet metal

Up to 45 WPSI

Maximum operation temperature 950 ° F

HT 1200 ° F



Cast Aluminum

Heat cool option

Available bronze and aluminum



Open Coil and Tubular Duct Heater

Available in open coil and tubular style

All voltages and systems available

Complete with controls and contactors



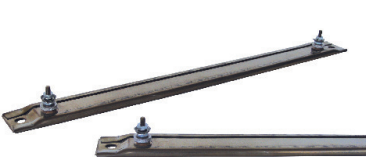
Control Panel

Temperature control panels

Temperature control panel with SCR switching

Different Nema enclosures available

Multiple zones



SSH Strip Heater

Ceramic tape construction

Stainless steel sheet metal

Up to 30 WPSI

Maximum length 60” / Maximum width 5”

Maximum operating temperature 800 ° F



Channel Strip Heater

Ceramic construction

Steel tube with nickel, black oxide, hot galvanized or black galvanized treatment

Up to 35 WPSI

Maximum length 60” / 1.5” wide

Maximum operating temperature 800 ° F



Moisture Proof Strip Heater

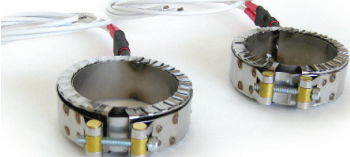
Mica or ceramic construction / Fully sealed

Steel tube with nickel, black oxide, hot galvanized or black galvanized treatment

Up to 30 WPSI

Maximum length 60” / 1.5” wide

Maximum operating temperature 800 ° F



Triflex Heater

Available in aluminum or stainless steel

All diameter and widths available

Moisture proof available in stainless steel construction

Operating Temperature between 800° F to 1000° F



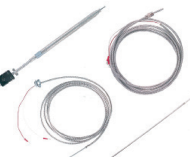
Triflex Mica Heater

Available in stainless steel or steel

Can be flat, square or rectangular

Manufactured with precise cnc and laser cut

Operating Temperature up to 900° F



Sensors

Types J and K available

Armour and stainless steel shield

All adaptors are available

Silver brazed tip at 2642 ° F

TRIVOLT INDUSTRIES ACCESSORIES



WIRE AND SLEEVING AND ACCESSORIES

SEW Wire 200° C
TGGT Wire 250° C
MGT Wire 450° C
Ultra Leadwire
Thermocouple Extension
Hight Temp Sleevng
Armour and Stainless Overbraid
High Temperature Terminal Lugs
Cable Ties
High Temperature Plugs
High Temperature Ceramic Wire Nuts

THERMOCOUPLES ACCESSORIES

Bayonet Cap
Plugs Type J - K
Panel Mount Jacks

PRESS TRANSDUCERS

Rupture Discs
Pressure Transducers
Pressure Indicators

SPRAYS

Silicone Mold Release
Non-Silicone Mold Release
Paintable Mold Release
Rust Inhibitor

TEMPERATURE CONTROLS

Control Panels
1/4 Din
1/8 Din
1/6 Din



Thermolator

Available Soon  
Call for inquiries

TRIVOLT INDUSTRIES INC.

4491 boul des Grandes Prairies  
Montréal, Québec H1R 1A5

Tel.: 514.321.4460 Toll free tel.: 1  
866.321.4460  
Fax: 514.321.4437 Toll free fax: 1  
866.321.4437

Trivolt Industries is a supplier of electrical heaters and sensors. We service different types of markets, from injection molding and extrusion, packaging, pressure and blow molding, rubber extrusion, mold makers, chemical, food, rail and more.

At Trivolt Industries, we believe in working in partnership with our customers, matching our expertise and depth of knowledge with your needs. Our Moisture Proof Strip Heaters we developed specially for the rail industry is a perfect example of the types of challenges we look forward to. We ensure the highest quality heaters and stand behind our products with a superior level of before-and-after sales service. We have implemented a successful “SOS Service”, which is a 24-72 hour service we offer our customers in urgent cases.

**Quality Assurance:** We ensure a stringent internal quality process that guarantees a reliable product is delivered to our customers every time. Each heater undergoes a variety of testing maximizing efficiency and successful usage. All our products are presently CSA and NRTCUL approved and CE certified.

Our customer base has benefited from this applied quality process by having on-time deliveries and avoiding down time. Trivolt Industries is committed to best serve your market needs.